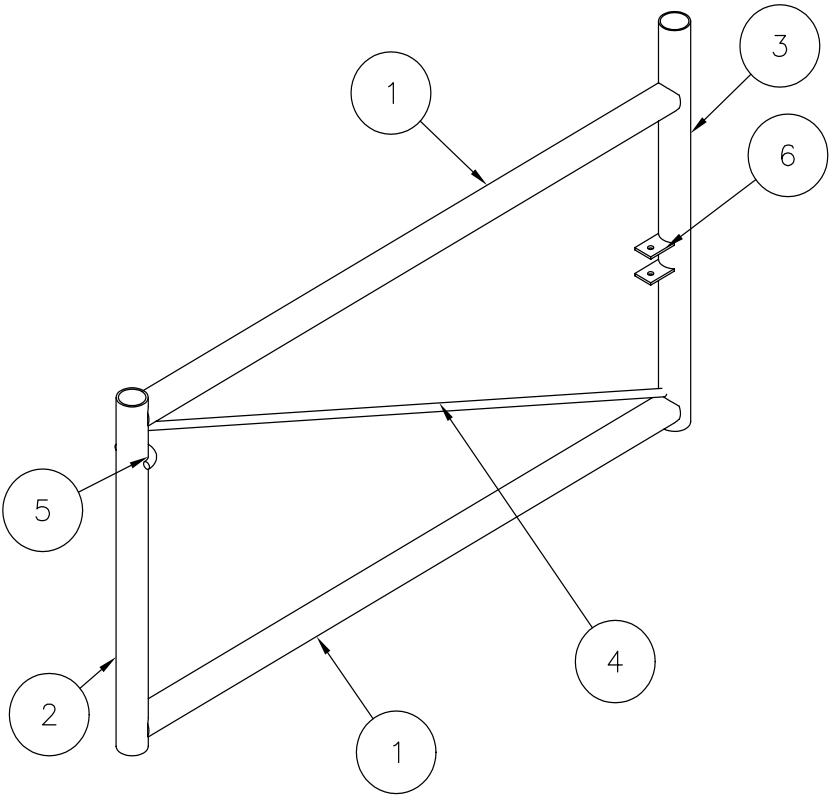
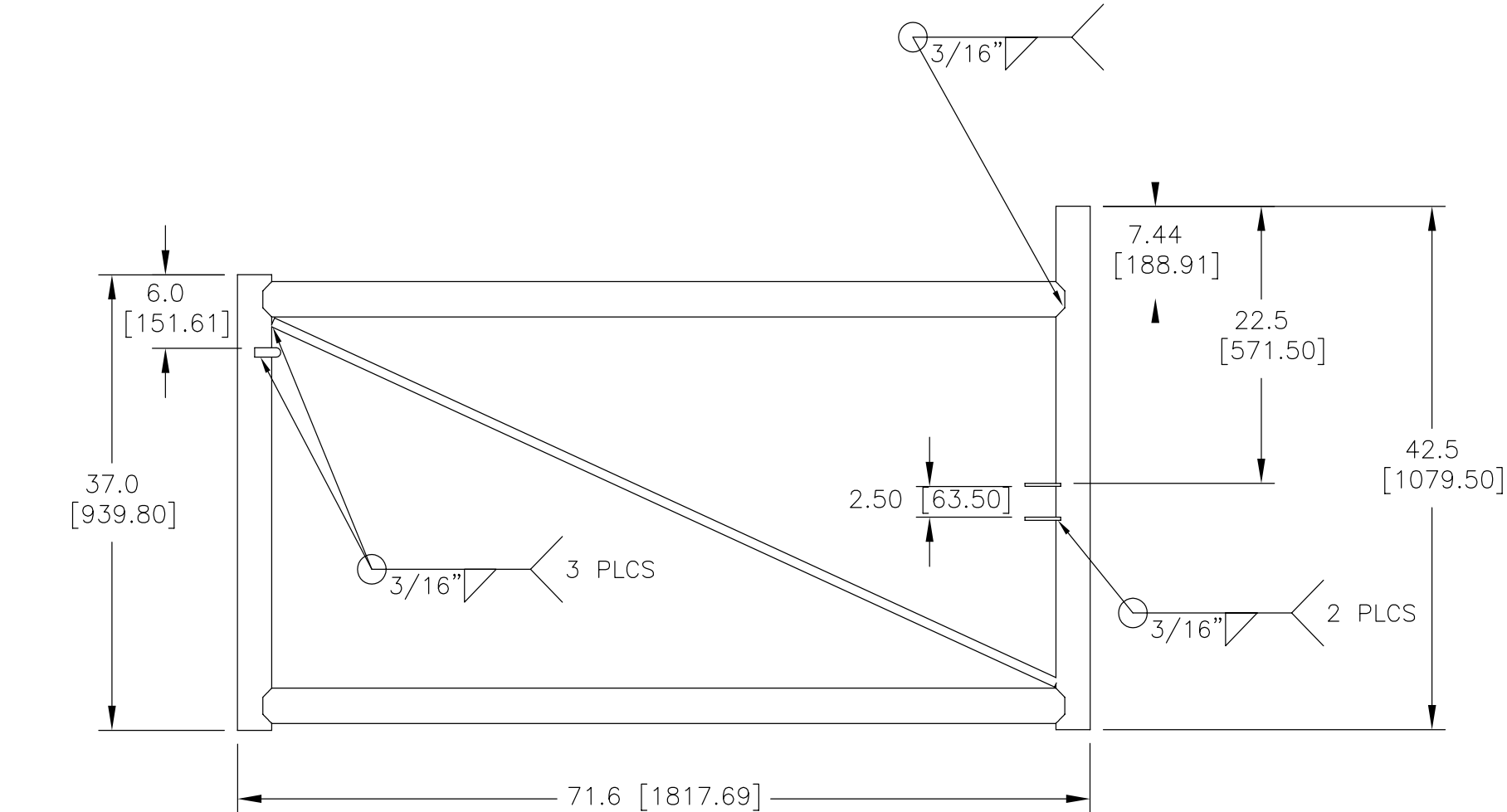


PARTS LIST			
ITEM	PART NUMBER	DESCRIPTION	QTY
1	HS600.01	PIPE 1	2
2	HS600.02	PIPE 2	1
3	HS600.03	ANTENNA MOUNT PIPE	1
4	HS600.05	SUPPORT ROD	1
5	HS600.06	C-RING	1
6	HS600.07	MOUNTING PLATE	2

REV	ZONE	DESCRIPTION	BY	DATE
A		INITIAL RELEASE	MLL	11/13/99
B		REVISED & REDRAWN	JTS	03/13/01
C		CORRECTED VIEW	KAM	09/04/03
D		UPDATE DESIGN	ACG	04/02/03
E		REMOVED STIFFARM TABS	ACG	11/09/04
F		SAVED AS ASSEMBLY DRAWING	ACG	10/13/06
G		ADD & UPDATE DIMENSIONS	ACG	04/18/23
J		ADD STIFFARM TABS	ACG	11/17/23



NOTES:
1. ALL METRIC DIMENSIONS ARE IN BRACKETS.
2. STAMP PART IDENTIFICATION NUMBER.

These drawings and specifications are proprietary property and may be used only for the specific purpose authorized in writing. ALL DIMENSIONS ARE IN INCHES U.O.S. TOLERANCES UNLESS OTHERWISE SPECIFIED: .X = ± .090 ANGLES = ± 2° .XX = ± .060 FR ACTIONS = ±1/32 .XXX = ± .010 REMOVE BURRS AND BREAK EDGES .005 DO NOT SCALE THIS PRINT	DRAWN BY: ACG	SHEET: 1 of 1	PART NUMBER: FM-HS600
	CHECKED BY: MKV	SCALE: NTS	DESCRIPTION: 72" HD STANDOFF BRACKET
	DATE: 08/15/06	MATERIAL: ASTM A36 & A53	DRAWING TYPE: ASSEMBLY DRAWING
	REVISION: J	FINISH: ASTM A123 WEIGHT: 111.46 LBS	